

As the leading manufacturer of Toilet Partition Hardware, Metlam Australia understands the challenges faced by those who don't specialise in the industry to understand not only the language of TPH but what purpose each of the different componentry serves.

This information sheet is to assist you in the specifying and ordering of Metlam Australia Toilet Partiton Hardware.

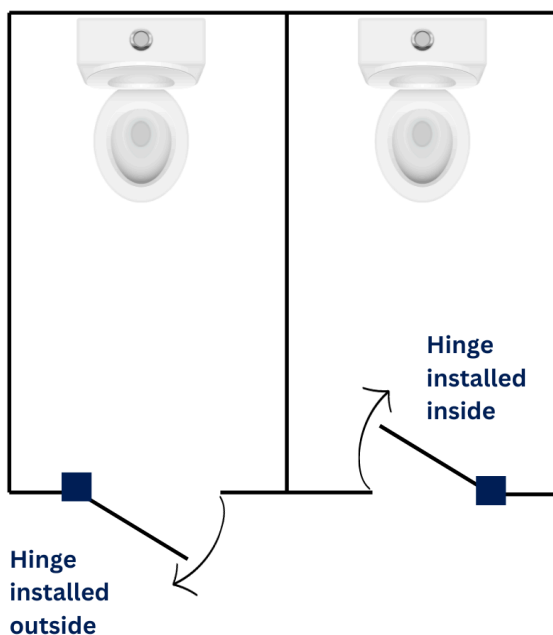
Hinges - Quantity Required: Please specify the quantity of hinges you require.

Metlam Australia supplies hinges as individuals (each). Metlam Australia recommends 3 hinges per door to prevent the door bowing.

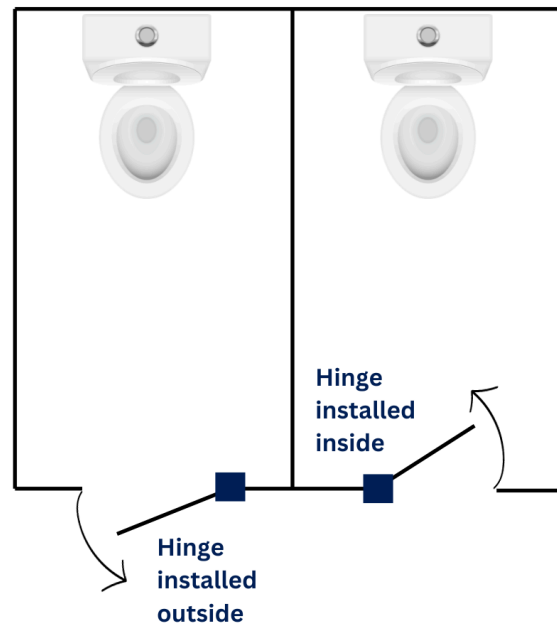
Hinges - Handing: Left Hand or Right Hand

Understanding hinge handing is crucial. Hinge handing refers to the side of the door where the hinges are placed. Metlam Australia Hinge Handing is determined by a person sitting on the toilet, facing the back of the cubicle door from inside the cubicle. If you are looking at the door and the hinge is visible on the Right-Hand side, it is a RIGHT-HAND hinge. If you are looking at the door and the hinge is visible on the Left-Hand side, it is a LEFT-HAND hinge.

LEFT HINGE



RIGHT HINGE



However, in instances where the cubicle door is to open outwards not inwards (meaning the door moves away from the toilet) the hinges are to be mounted on the outside of the cubicle this allows the door to open outwards. This type of install can be seen in Ambulant Cubicles. To nominate the handing of this hinge, you would be standing on the outside of the cubicle looking at the hinges on the front of the door.

You then have the option to choose a hold open or hold close operating function for the door. This means that if you wish the door to close after use, then you need to choose a hold closed function. If you wish the door to stay open after use, then you will need to choose a hold open function.

The handing of hold open/hold closed function should be nominated when ordering your product so they can be set to the correct handing ready for installation.

Gravity Hinges - have no mechanical components and therefore assist the door to move to Hold Open or Hold Closed position. Gravity Hinges cannot be adjusted.

Spring Hinges - include mechanical components that allow door movement to Hold Open or Hold Closed. Spring Hinges can be adjusted or tensioned to determine the force (this can be done on site by the installer).

Board Thickness- To ensure the correct fixings are supplied, please specify the board thickness (applies for Screw Fix and Bolt Through set up).

- If board thickness is not specified at the time of ordering Metlam Australia will provide the largest fixings available. Fixings can be cut down on site to suit board thickness.

Mounting - Screw Fix or Bolt Through: Please specify mounting type. The Metlam Australia website states what mounting types are available for each product.



METLAM
A U S T R A L I A

T 1300 METLAM E sales@metlam.com.au

metlam.com.au

Finish - Please specify which finish you are after. The Metlam Australia website states what finishes are available for each product.

- SCP – Satin Chrome Plate
- DESIGNER – Satin Matte Black
- ANMB – Antimicrobial Coated
- BCP – Bright Chrome Plate

Kits: Metlam Australia's Toilet Partition Hardware can be purchased in a complete set or "kit", inclusive of the components required for use to install one partition.

Each Kit Contains:

- **1 x Lock and Indicator Set**
- **1 x Set of Hinges (kits can include 2 hinges or 3 hinges per pack)**
- **1 x Hat and Coat Hook**
- **1 x Door Bumper**
- **1 x Staple (optional)**

*Please note Kit pricing will vary depending on components selected.

The components for your kit should be selected from our various Toilet Partition Hardware Product Categories.

As the leading manufacturer of Toilet Partition Hardware, Metlam Australia understands the challenges faced by those who don't specialise in the industry.

This information sheet is to assist you in determining the handing for an Ambulant Lock.

If you have an Ambulant Lock and are unsure if it is a LH or RH Lock, simply enter the cubicle and face the back of the cubicle door as if you were sitting on the toilet. You would mount the lock on the side where the lever on the handle will turn over, rather than under. **(Please see image below as a reference).**

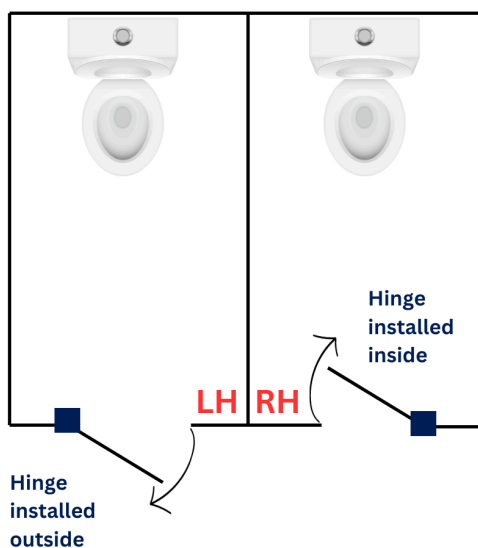


Installation of Ambulant Lock based on Hinge Handing

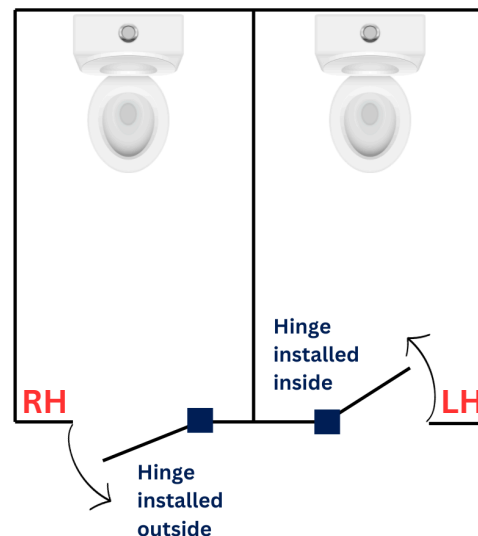
If you are trying to determine which handing you need based on where the hinges are mounted, then please follow the below;

1. If your hinges are mounted on the inside for the door to open inward, you would want the opposite handing Ambulant Lock as the hinges.
2. If your hinges are mounted on the outside for the door to open outward, you would want the same handing Ambulant Lock as the hinges.

LEFT HINGE



RIGHT HINGE



Please contact your **Local Metlam Australia contact** for more information.



Visit Metlam Australia's YouTube Channel to see our video on Understanding the language of Toilet Partition Hardware

